

Roll: **20210426-9124**

Camera: **Canon EOS 5D Mark III: E53**

Film: **Full frame digital**

Subject:

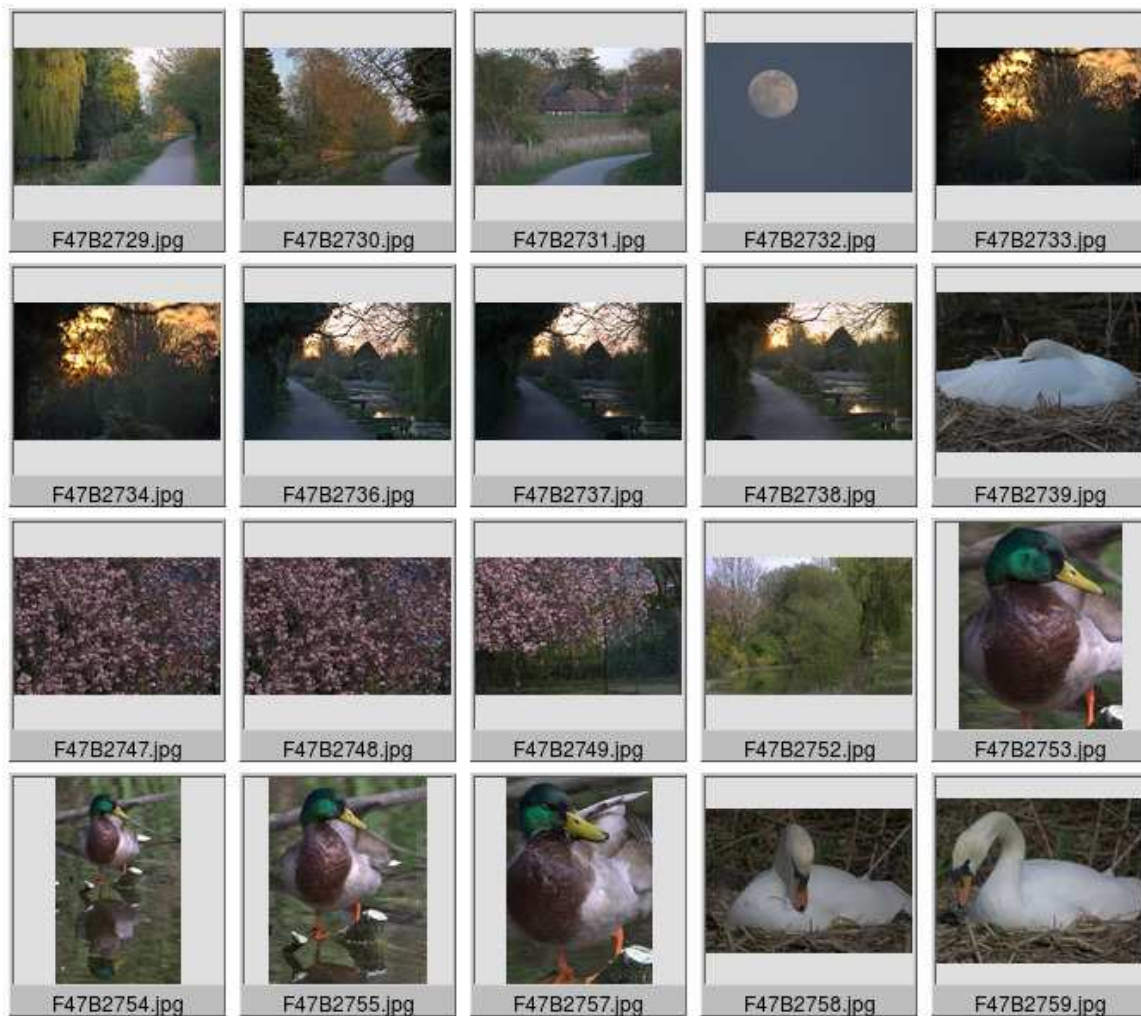
Grantham Canal and some Cherry Blossom in the Park.

Notes:

Most of the shots from 25th were deleted the light was very poor and I did not have a tripod with me. Those take on 26th are from a routine dog walk through the park, down to the end of Edward Road then up the Grantham Canal. The shots of the nesting swans were supposed to be the precursor to doing a year long log of the local swans but somewhere along the line the project died and these are not really of any interest. The pictures of the Mallard Drake have a bit more pizzazz.

Dates:

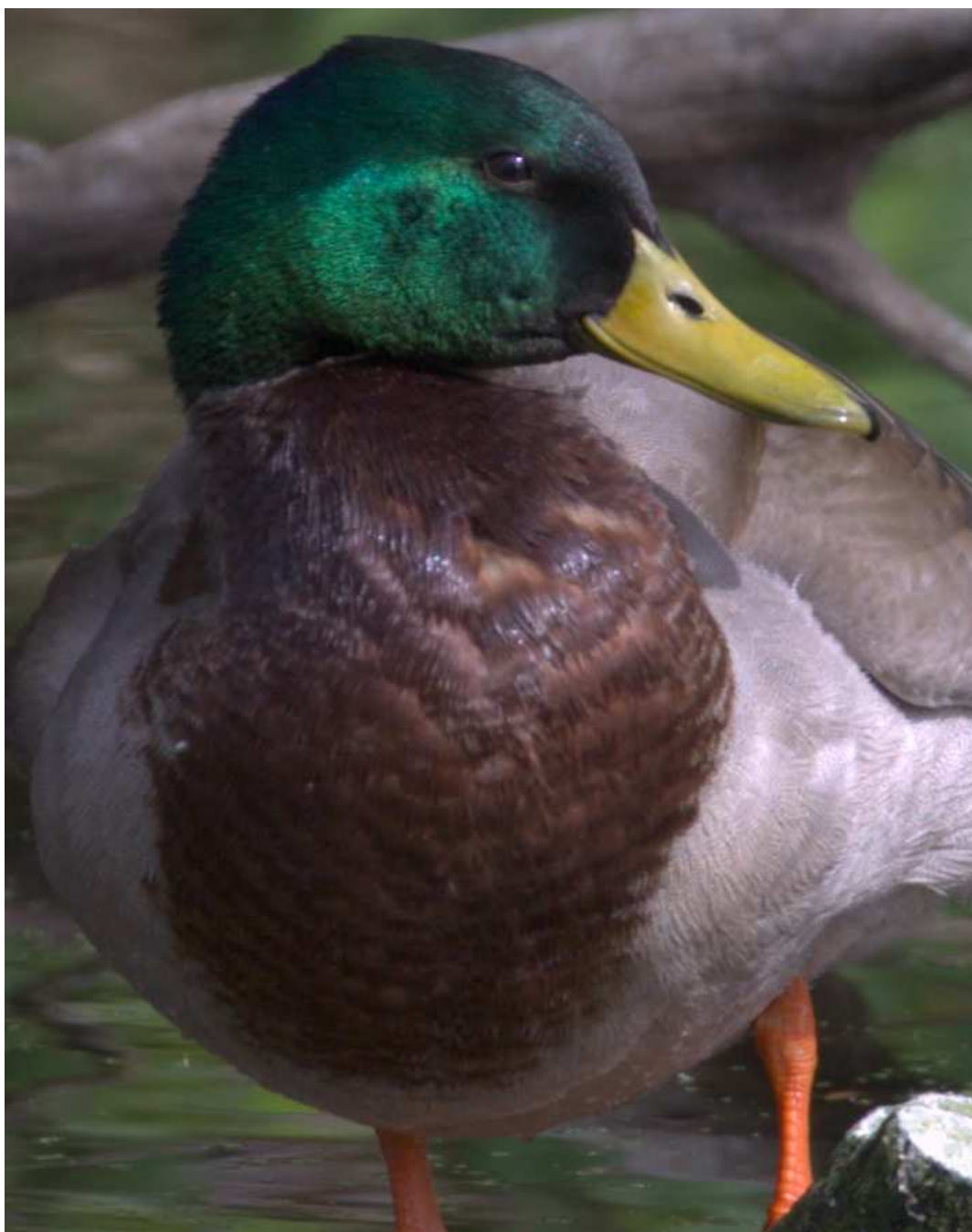
Dates and times are verified from original exif data.



Frames:

F47B2729 20210425 19:45:01 Approaching dusk.
 F47B2730 20210425 19:46:13 Approaching dusk.
 F47B2731 20210425 19:48:45 Approaching dusk.
 F47B2732 20210425 19:49:05 The moon is out.
 F47B2733 20210425 19:53:39 Sunset.
 F47B2734 20210425 19:53:39 Sunset.

F47B2736 20210425 19:53:58 Below the horizon.
F47B2737 20210425 19:53:58 Night falling.
F47B2738 20210425 19:54:33 Night falling.
F47B2739 20210425 20:04:34 Nesting swan.
F47B2747 20210426 14:23:24 Spring blossom.
F47B2748 20210426 14:23:24 Spring blossom.
F47B2749 20210426 14:23:48 Spring blossom.
F47B2752 20210426 14:41:32 Canal walk.
F47B2753 20210426 14:42:38 Anas the magnificent.
F47B2754 20210426 14:42:45 Anas Platyrhynchos.
F47B2755 20210426 14:42:45 Anas Platyrhynchos.
F47B2757 20210426 14:43:08 Anas Platyrhynchos.
F47B2758 20210426 14:46:01 Nesting swan.
F47B2759 20210426 14:46:34 Nesting swan.



Anas the magnificent.

